



# ECG - Aula 3

## - Frequência cardíaca

**1. Frequência cardíaca**

**2. Ritmo**

**3. Eixo**

**4. Hipertrofia**

**5. Infarto**



**1 quadradinho = 0,04 s**

**9 quadradinhos = 0,36 s**

**1 — — 0,36 s**

**x — — 60 s**

**x = 166 bpm**



**1 quadradinho = 0,04 s**

**5 quadradinhos = 0,2 s**

**1 — — 0,2 s**

**x — — 60 s**

**x = 300 bpm**



**1 quadradinho = 0,04 s**

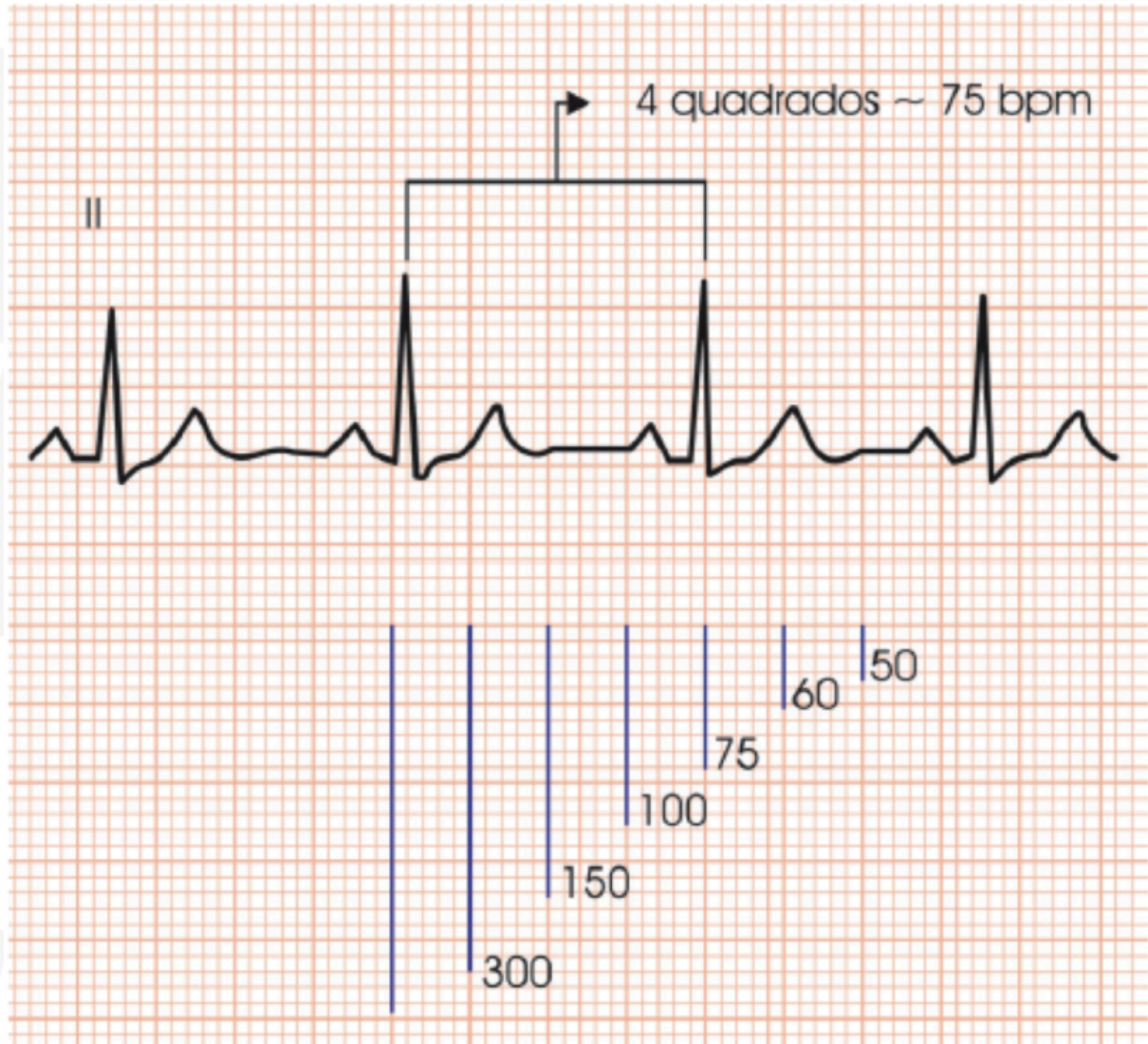
**10 quadradinhos = 0,4 s**

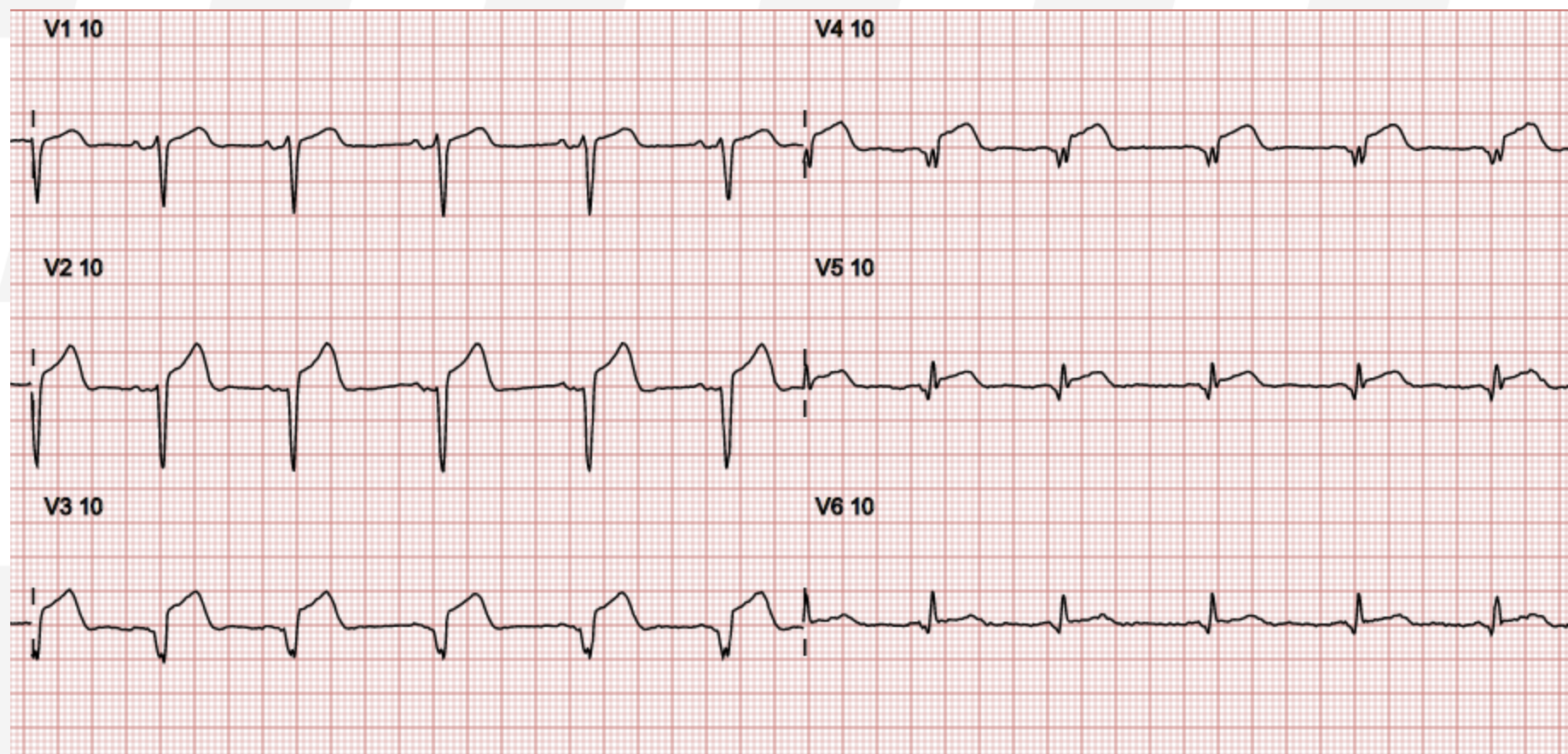
**1 — — 0,4 s**

**x — — 60 s**

**x = 150 bpm**









**1 quadradinho = 0,04 s**

**9 quadradinhos = 0,36 s**

**1 — — 0,36 s**

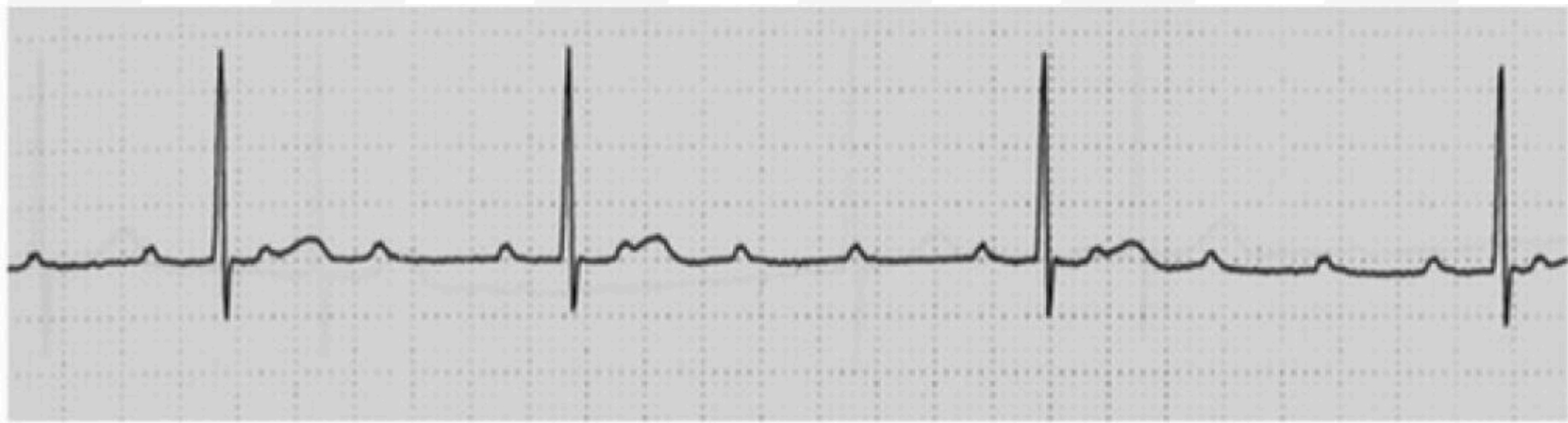
**x — — 60 s**

**x = 166 bpm**

**1500 / 9 = 166 bpm**

# Observações:

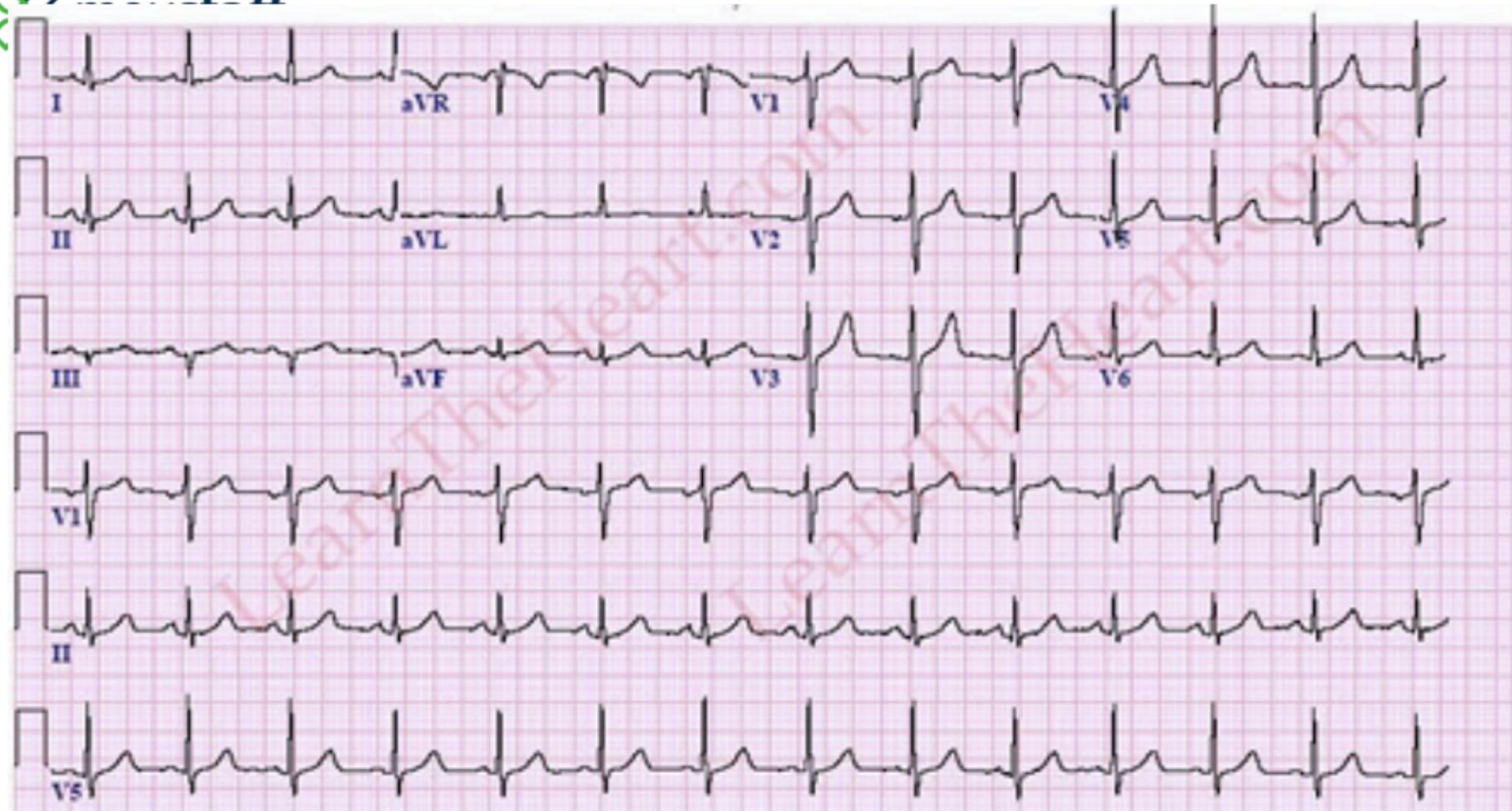








1-66



25mm/s 10mm/mV 400Hz 005C 125L 254 CID: 36

EID Unconfirmed EDT: ORDER:





**Até a próxima**